

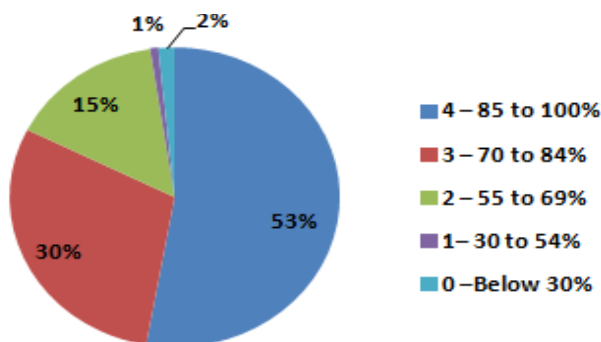
Criterion II – Teaching–Learning and Evaluation

Student Satisfaction Survey on Teaching Learning Process

Following are questions for online student satisfaction survey regarding teaching learning process.

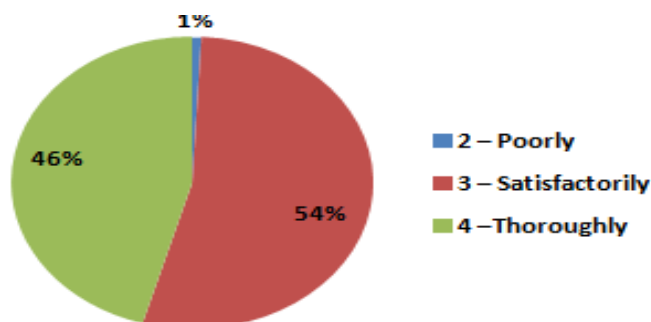
1. How much of the syllabus was covered in the class?

Particulars	Percentage
85 to 100%	53%
70 to 84%	30%
55 to 69%	15%
30 to 54%	1%
Below 30%	2%
Grand Total	100%



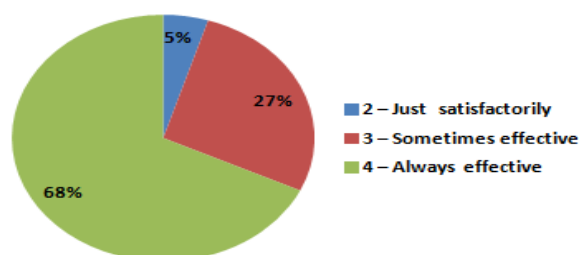
2. How well did the teachers prepare for the classes?

Particulars	Percentage
Thoroughly	46%
Satisfactorily	54%
Poorly	1%
Indifferently	0%
Won't Teach at all	0%
Grand Total	100)%



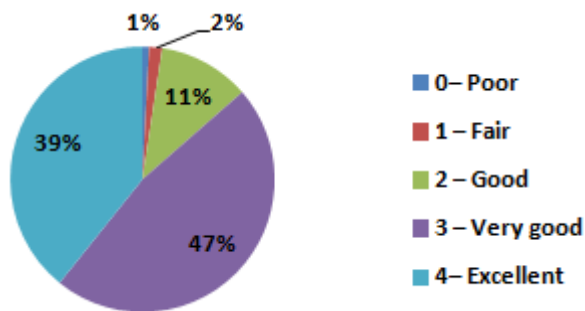
3. How well were the teachers able to communicate?

Particulars	Percentage
Always Effective	68%
Generally Ineffective	27%
Just Satisfactorily	5%
Sometimes Effective	0%
Always Effective	0%
Grand Total	100)%



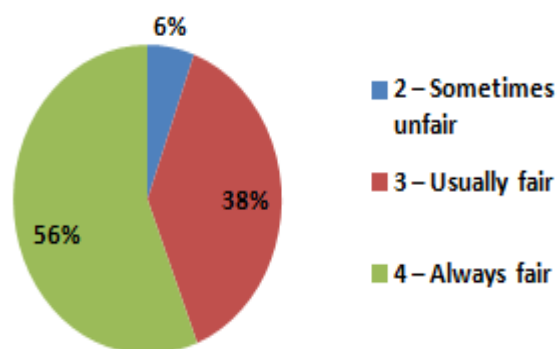
4. The teacher's approach to teaching can best be described as

Particulars	Percentage
Excellent	39%
Very Good	47%
Good	11%
Fair	2%
Poor	1%
Grand Total	100)%



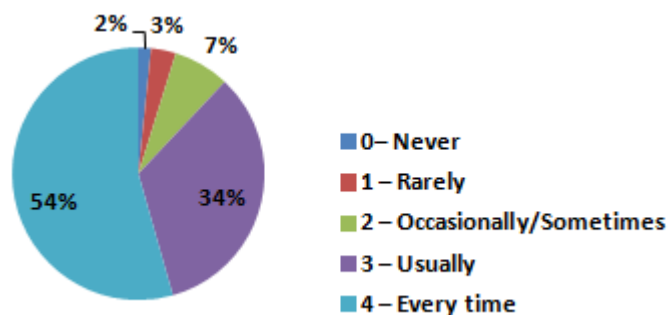
5. Fairness of the internal evaluation process by the teachers.

Particulars	Percentage
Always Fair	56%
Usually Fair	38%
Sometimes Unfair	6%
Usually unfair	0%
Unfair	0%
Grand Total	100)%



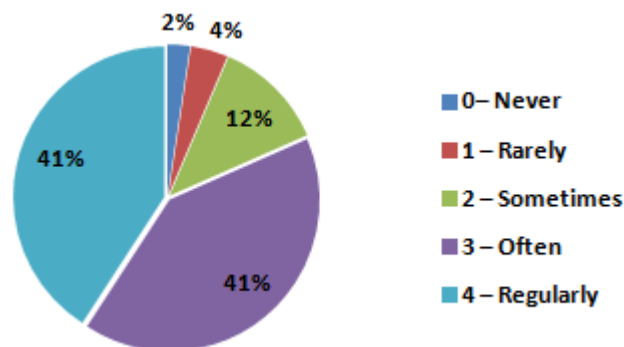
6. Was your performance in assignments discussed with you?

Particulars	Percentage
Every time	54%
Usually	34%
Occasionally/Sometimes	7%
Rarely	3%
Never	2%
Grand Total	100%



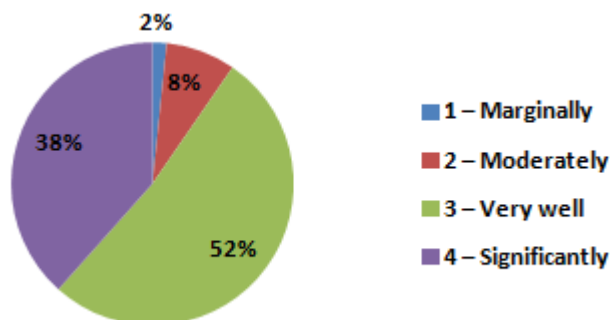
7. The institute takes active interest in promoting internship, student exchange, field visit opportunities for students.

Particulars	Percentage
Regularly	41%
Often	41%
Sometimes	12%
Rarely	4%
Never	2%
Grand Total	100%



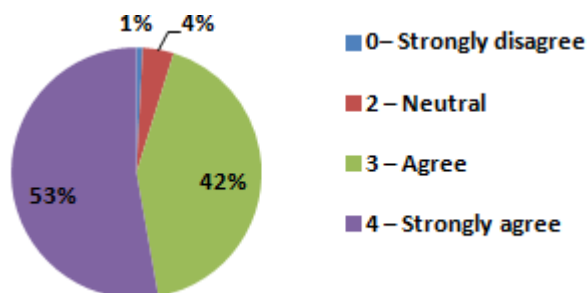
8. The teaching and mentoring process in your institution facilitates you in cognitive, social and emotional growth.

Particulars	Percentage
Significantly	38%
Very well	52%
Moderately	8%
Marginally	2%
Not at all	0%
Grand Total	100%



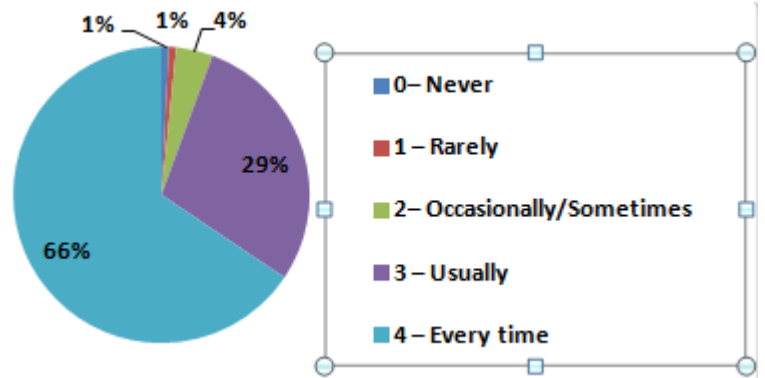
9. The institution provides multiple opportunities to learn and grow

Particulars	Percentage
Strongly agree	53%
Agree	42%
Neutral	4%
Disagree	0%
Strongly disagree	1%
Grand Total	100%



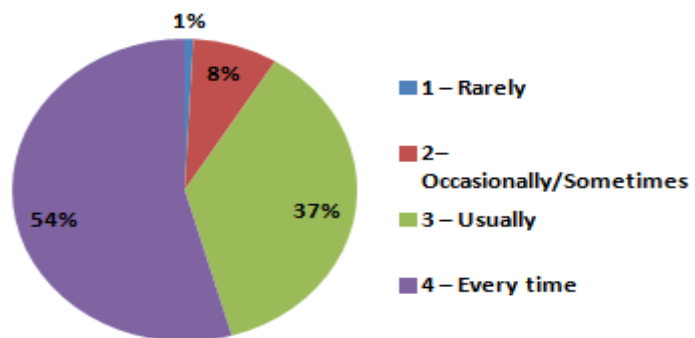
10. Teachers inform you about your expected competencies, course outcomes and programme outcomes.

Particulars	Percentage
Every time	66%
Usually	29%
Occasionally/Sometimes	4%
Rarely	1%
I don't have a mentor	1%
Grand Total	100%



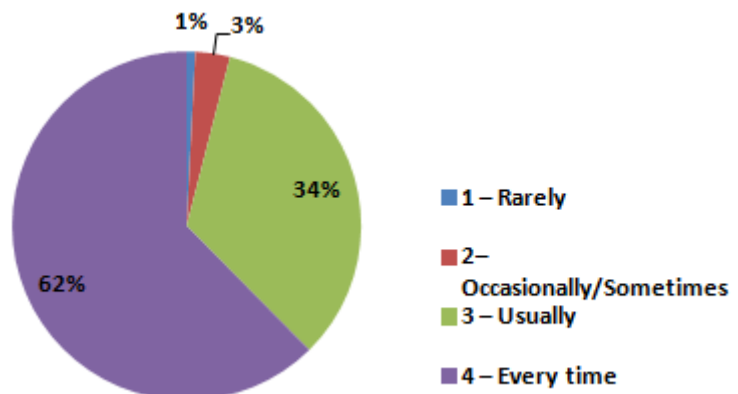
11. Your mentor does a necessary follow-up with an assigned task to you.

Particulars	Percentage
Every time	54%
Usually	37%
Occasionally/Sometimes	8%
Rarely	1%
I don't have a mentor	0%
Grand Total	100%



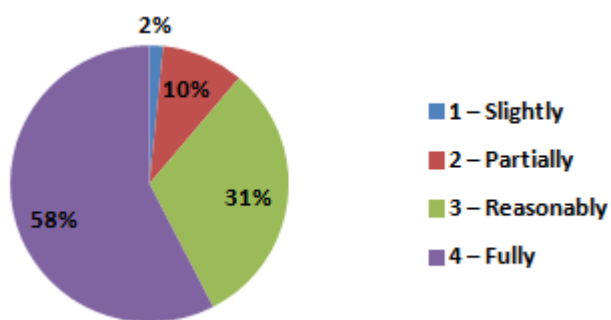
12. The teachers illustrate the concepts through examples and applications.

Particulars	Percentage
Every time	62%
Usually	34%
Occasionally/Sometimes	2%
Rarely	1%
Never	0%
Grand Total	100%



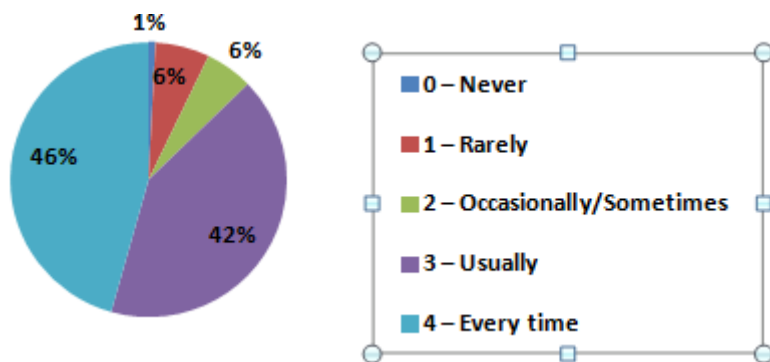
13. The teachers identify your strengths and encourage you with providing right level of challenges.

Particulars	Percentage
Fully	58%
Reasonably	31%
Partially	10%
Slightly	2%
Unable to	0%
Grand Total	100%



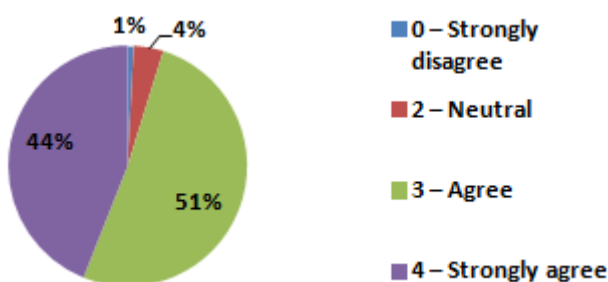
14. Teachers are able to identify your weaknesses and help you to overcome them.

Particulars	Percentage
Every time	46%
Usually	46%
Occasionally/Sometimes	6%
Rarely	2%
Never	1%
Grand Total	100%



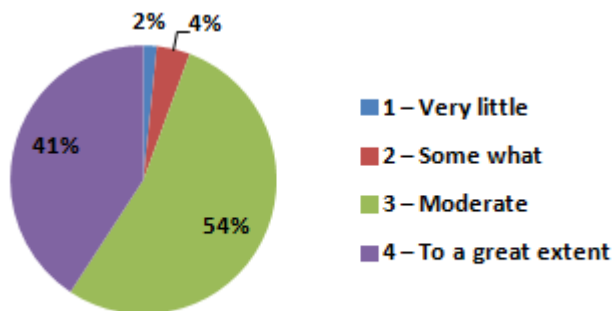
15. The institution makes effort to engage students in the monitoring, review and continuous quality improvement of the teaching learning process.

Particulars	Percentage
Strongly agree	44%
Agree	51%
Neutral	4%
Disagree	1%
Strongly disagree	0%
Grand Total	100%



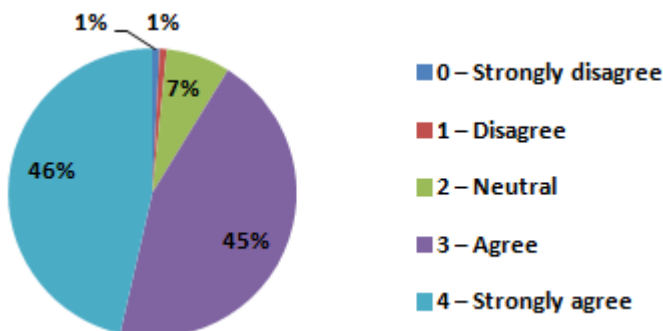
16. The institute/ teachers use student centric methods, such as experiential learning, participative learning and problem solving methodologies for enhancing learning experiences.

Particulars	Percentage
To a great extent	41%
Moderate	54%
Some what	4%
Very little	2%
Not at all	0%
Grand Total	100%



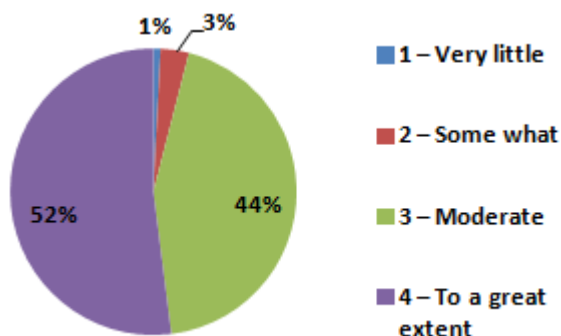
17. Teachers encourage you to participate in extracurricular activities.

Particulars	Percentage
Strongly agree	46%
Agree	45%
Neutral	7%
Disagree	1%
Strongly disagree	1%
Grand Total	100%



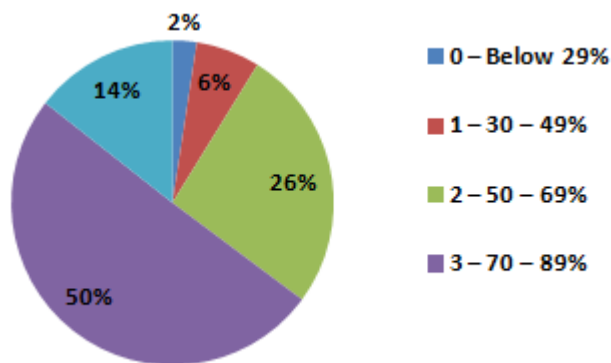
18. Efforts are made by the institute/ teachers to inculcate soft skills, life skills and employability skills to make you ready for the world of work.

Particulars	Percentage
Strongly agree	52%
Agree	44%
Neutral	3%
Disagree	1%
Strongly disagree	0%
Grand Total	100%



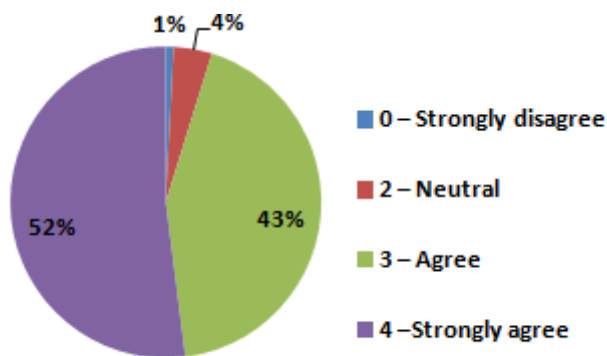
19. What percentage of teachers use ICT tools such as LCD projector, Multimedia, etc. while teaching?

Particulars	Percentage
Above 90%	14%
70% to 89%	50%
50% to 69%	26%
30% to 49%	6%
Below 29 %	2%
Grand Total	100%



20. The overall quality of teaching-learning process in your institute is very good.

Particulars	Percentage
Strongly agree	52%
Agree	43%
Neutral	4%
Disagree	0%
Strongly disagree	1%
Grand Total	100%



21. Provide observation / suggestions to improve the overall teaching – learning experience in your institution.

Students have felt that overall teaching experience was great. Interactive sessions have made the students enjoy the curriculum. Most of the students have expressed that Teaching doesn't need improvement but at the same time some of them have suggested that smart classrooms could be used and learning through Educom make the teaching session more interesting.

Some of the students have suggested that Teachers must make little more use of ICT and Projectors. They have also felt that, individual attention should be given to the students by Teachers. It is really a good feedback from the students as far as the Teaching is concerned.