



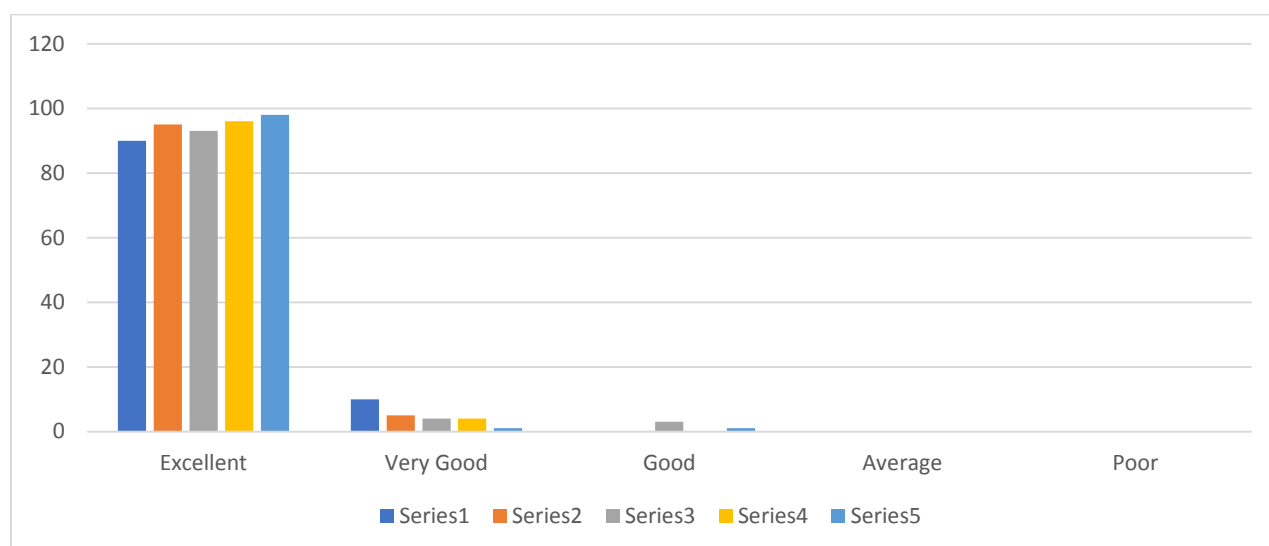
## Self Study Report – Cycle II

### ALUMNI FEEDBACK ANALYSIS ON CURRICULUM

**Year: 2015- 2016**

**Respondents: 100**

Sl.No	Attributes	A	B	C	D	E
1.	How would you rate the curriculum prescribed for your degree during your term in the college?	90	10	0	0	0
2.	How do you rate the courses which are skills related suiting to the Industry included into the programs?	95	5	0	0	0
3.	How do you rate the availability of materials and references regarding curriculum?	93	4	3	0	0
4.	How would you rate the following academic initiatives taken by the college to improve your competence as student? (Innovative Teaching-Learning methodologies, Seminars, Workshops, Projects etc..)	96	4	0	0	0
5.	How do you rate the relevance of your degree to your present job?	98	1	1	0	0



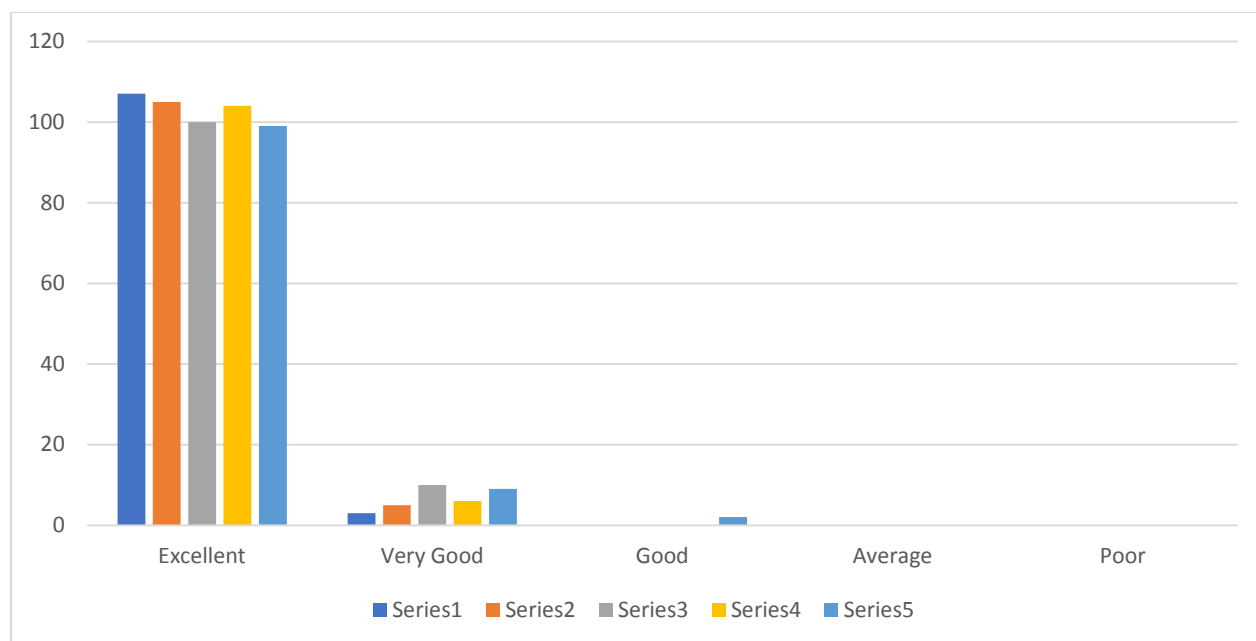


## Self Study Report – Cycle II

### ALUMNI FEEDBACK ANALYSIS ON CURRICULUM

**Year: 2016- 2017**  
**Respondents: 110**

Sl.No	Attributes	A	B	C	D	E
1.	How would you rate the curriculum prescribed for your degree during your term in the college?	107	3	0	0	0
2.	How do you rate the courses which are skills related suiting to the Industry included into the programs?	105	5	0	0	0
3.	How do you rate the availability of materials and references regarding curriculum?	100	10	0	0	0
4.	How would you rate the following academic initiatives taken by the college to improve your competence as student? (Innovative Teaching-Learning methodologies, Seminars, Workshops, Projects etc...)	104	6	0	0	0
5.	How do you rate the relevance of your degree to your present job?	99	9	2	0	0



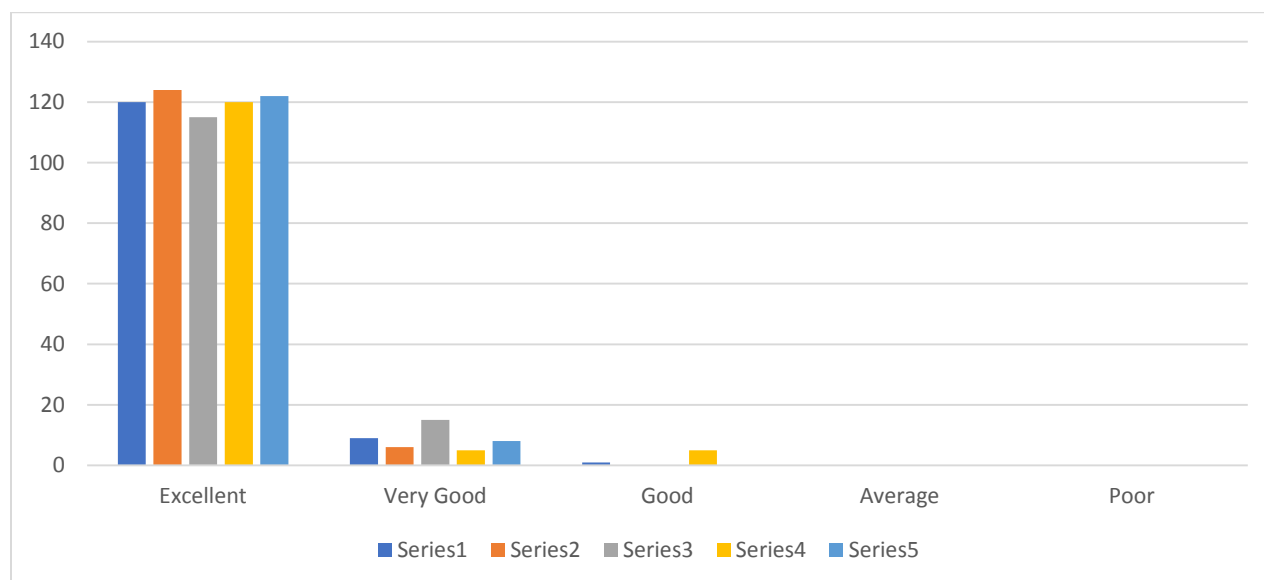


**Self Study Report – Cycle II**

**ALUMNI FEEDBACK ANALYSIS ON CURRICULUM**

**Year: 2017- 2018**  
**Respondents: 130**

Sl.No	Attributes	A	B	C	D	E
1.	How would you rate the curriculum prescribed for your degree during your term in the college?	120	9	1	0	0
2.	How do you rate the courses which are skills related suiting to the Industry included into the programs?	124	6	0	0	0
3.	How do you rate the availability of materials and references regarding curriculum?	115	15	0	0	0
4.	How would you rate the following academic initiatives taken by the college to improve your competence as student? (Innovative Teaching-Learning methodologies, Seminars, Workshops, Projects etc...)	120	5	5	0	0
5.	How do you rate the relevance of your degree to your present job?	122	8	0	0	0



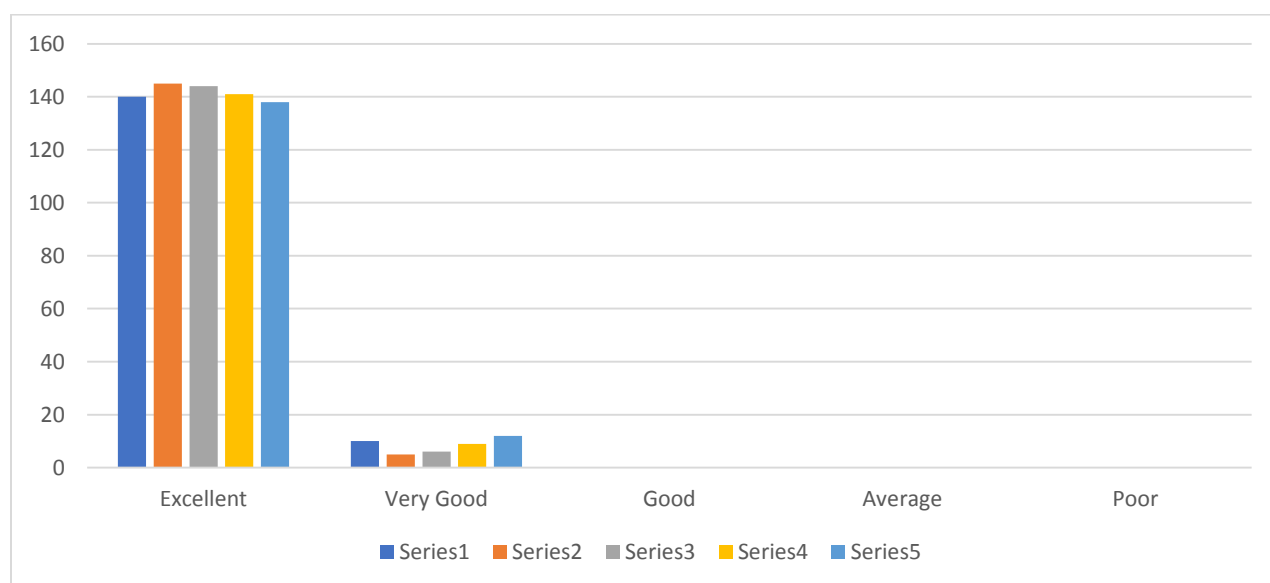


**Self Study Report – Cycle II**

**ALUMNI FEEDBACK ANALYSIS ON CURRICULUM**

**Year: 2018- 2019**  
**Respondents: 150**

Sl.No	Attributes	A	B	C	D	E
1.	How would you rate the curriculum prescribed for your degree during your term in the college?	140	10	0	0	0
2.	How do you rate the courses which are skills related suiting to the Industry included into the programs?	145	5	0	0	0
3.	How do you rate the availability of materials and references regarding curriculum?	144	6	0	0	0
4.	How would you rate the following academic initiatives taken by the college to improve your competence as student? (Innovative Teaching-Learning methodologies, Seminars, Workshops, Projects etc..)	141	9	0	0	0
5.	How do you rate the relevance of your degree to your present job?	138	12	0	0	0





Self Study Report – Cycle II

**ALUMNI FEEDBACK ANALYSIS ON CURRICULUM**

**Year: 2019- 2020**  
**Respondents: 120**

Sl.No	Attributes	A	B	C	D	E
1.	How would you rate the curriculum prescribed for your degree during your term in the college?	116	4	0	0	0
2.	How do you rate the courses which are skills related suiting to the Industry included into the programs?	112	8	0	0	0
3.	How do you rate the availability of materials and references regarding curriculum?	108	12	0	0	0
4.	How would you rate the following academic initiatives taken by the college to improve your competence as student? (Innovative Teaching-Learning methodologies, Seminars, Workshops, Projects etc..)	118	2	0	0	0
5.	How do you rate the relevance of your degree to your present job?	117	3	0	0	0

